

Cootamunra - Gundagai Regional Council





Infrastructure CGRC Roads

 Reg
 Sta
 Sta

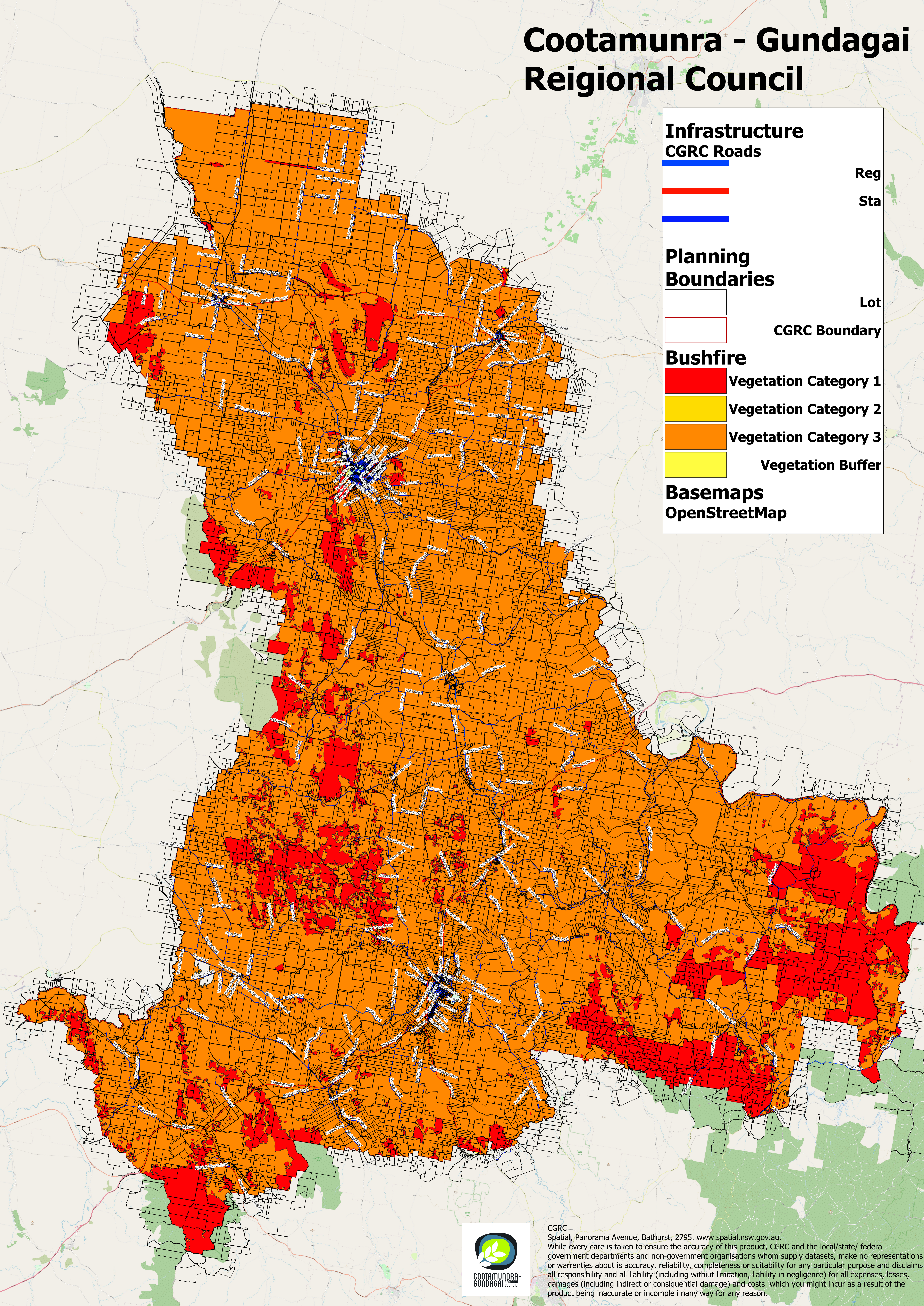
Planning Boundaries

 Lot
 CGRC Boundary

Bushfire

 Vegetation Category 1
 Vegetation Category 2
 Vegetation Category 3
 Vegetation Buffer

Basemaps OpenStreetMap



CGRC
 Spatial, Panorama Avenue, Bathurst, 2795. www.spatial.nsw.gov.au.
 While every care is taken to ensure the accuracy of this product, CGRC and the local/state/ federal government departments and non-government organisations whom supply datasets, make no representations or warranties about its accuracy, reliability, completeness or suitability for any particular purpose and disclaims all responsibility and all liability (including without limitation, liability in negligence) for all expenses, losses, damages (including indirect or consequential damage) and costs which you might incur as a result of the product being inaccurate or incomplete in any way for any reason.

Stockinbingal

Infrastructure

CGRC Roads

Reg

Sta

Planning Boundaries

Lot

CGRC Boundary

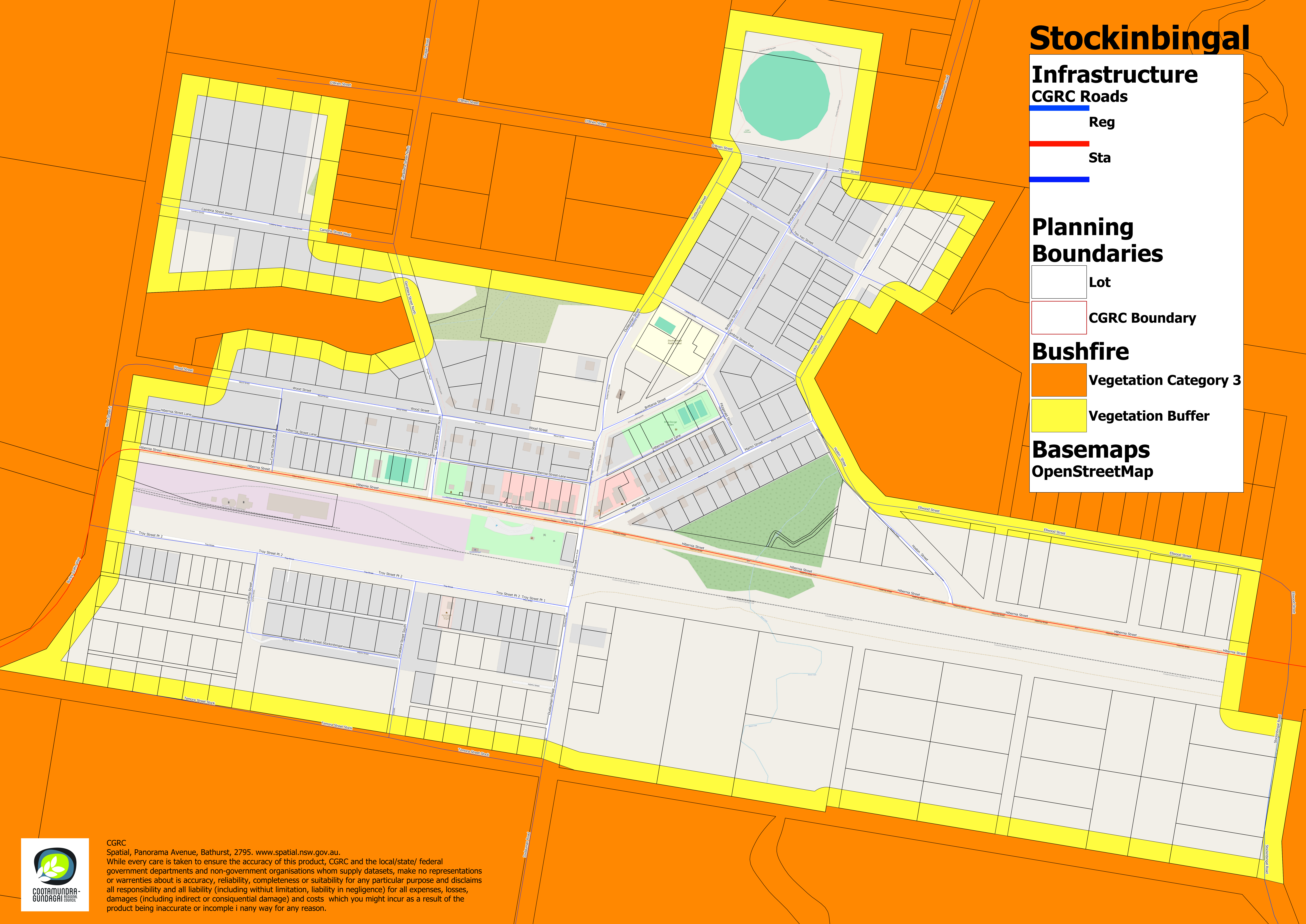
Bushfire

Vegetation Category 3

Vegetation Buffer

Basemaps

OpenStreetMap



CGRC
Spatial, Panorama Avenue, Bathurst, 2795. www.spatial.nsw.gov.au.
While every care is taken to ensure the accuracy of this product, CGRC and the local/state/ federal government departments and non-government organisations whom supply datasets, make no representations or warranties about is accuracy, reliability, completeness or suitability for any particular purpose and disclaims all responsibility and all liability (including without limitation, liability in negligence) for all expenses, losses, damages (including indirect or consequential damage) and costs which you might incur as a result of the product being inaccurate or incomplete in any way for any reason.

Wallenbeen

Infrastructure

CGRC Roads

Sta

Planning Boundaries

Lot

CGRC Boundary

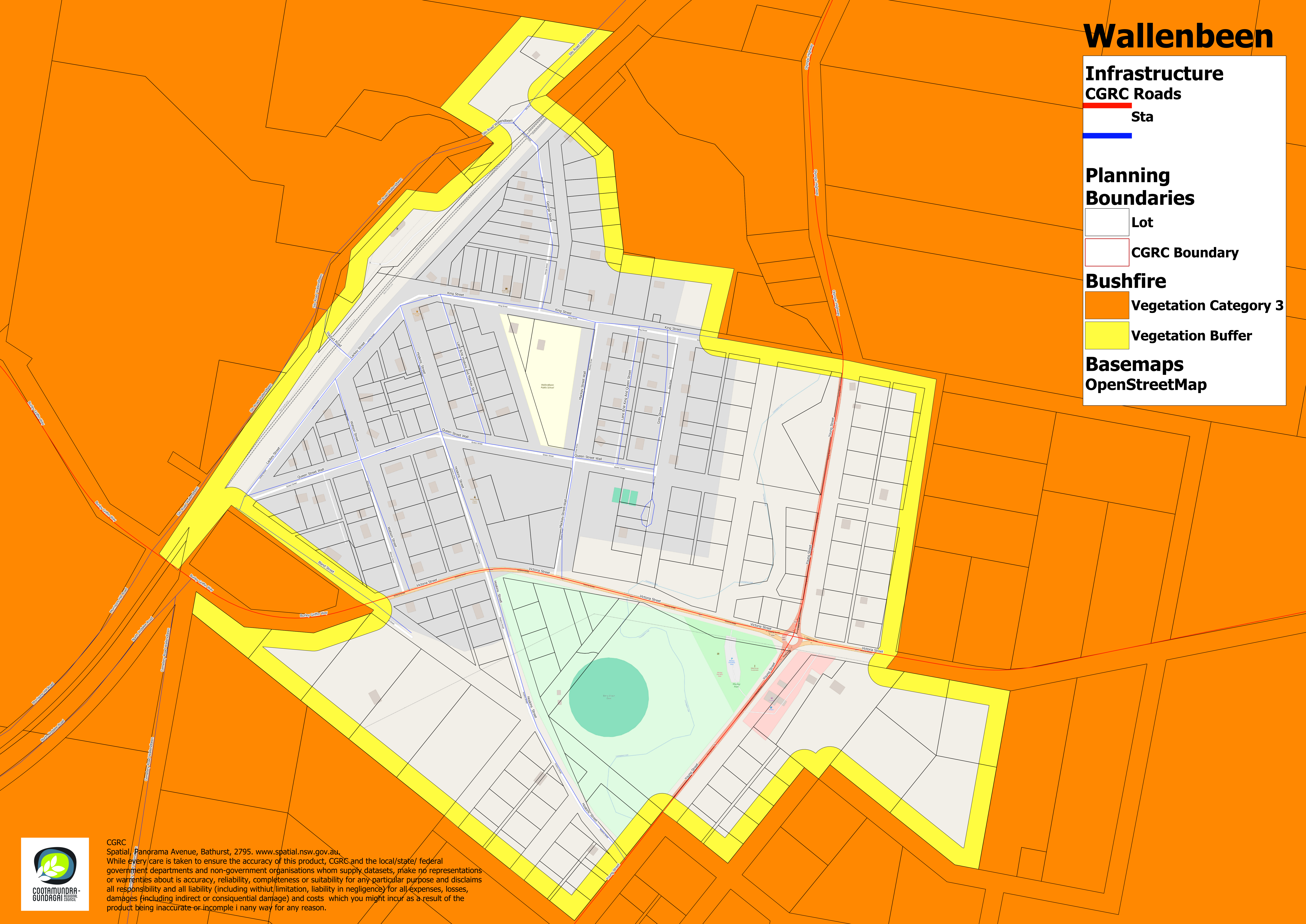
Bushfire

Vegetation Category 3

Vegetation Buffer

Basemaps

OpenStreetMap



CGRC
Spatial, Panorama Avenue, Bathurst, 2795. www.spatial.nsw.gov.au.
While every care is taken to ensure the accuracy of this product, CGRC and the local/state/ federal government departments and non-government organisations whom supply datasets, make no representations or warranties about is accuracy, reliability, completeness or suitability for any particular purpose and disclaims all responsibility and all liability (including without limitation, liability in negligence) for all expenses, losses, damages (including indirect or consequential damage) and costs which you might incur as a result of the product being inaccurate or incomplete in any way for any reason.

Cootamundra

Infrastructure CGRC Roads

Reg

Sta

Planning Boundaries

Lot

CGRC Boundary

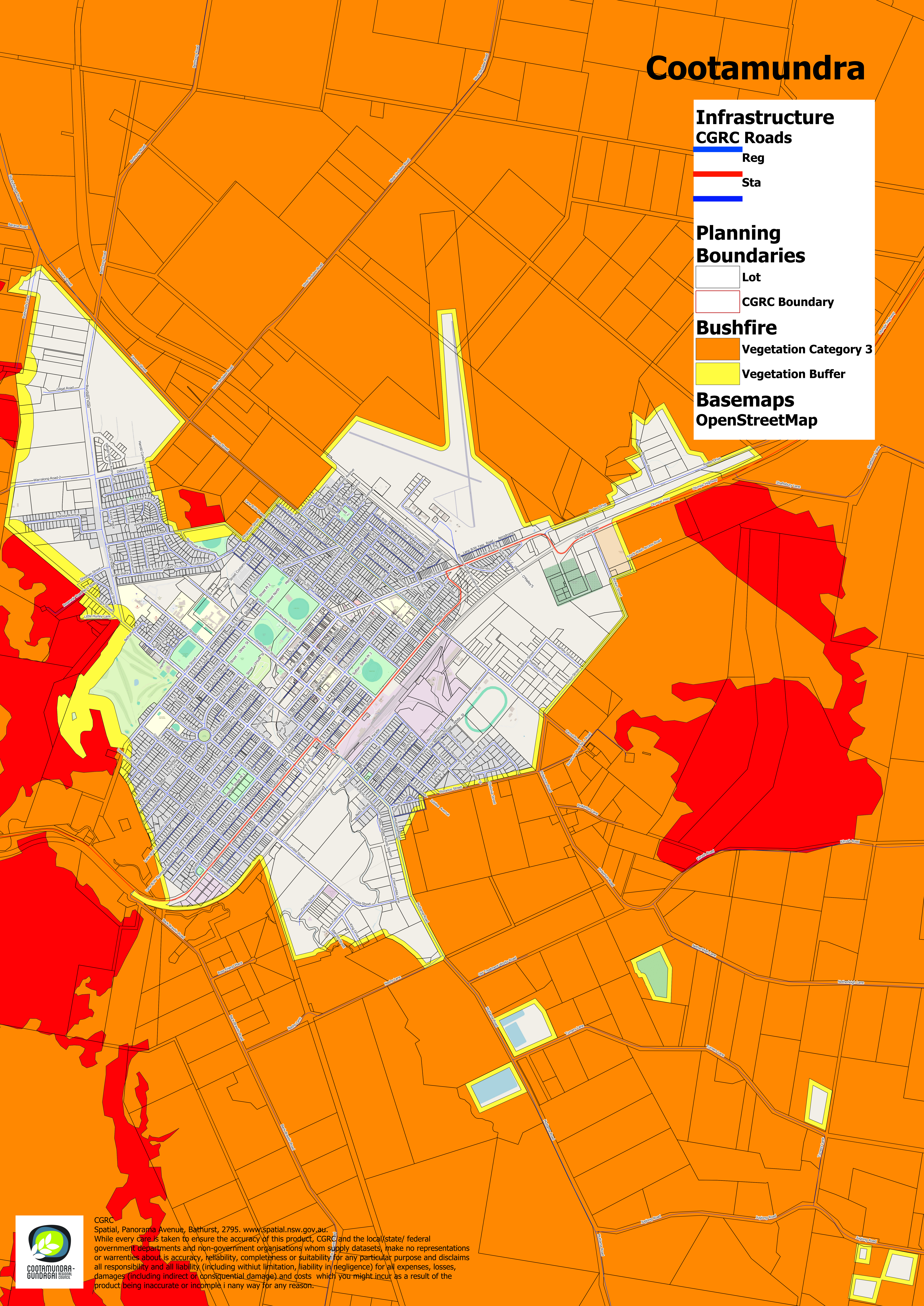
Bushfire

Vegetation Category 3

Vegetation Buffer

Basemaps

OpenStreetMap



CGRC Spatial, Panorama Avenue, Bathurst, 2795. www.spatial.nsw.gov.au. While every care is taken to ensure the accuracy of this product, CGRC and the local/state/ federal government departments and non-government organisations whom supply datasets, make no representations or warranties about its accuracy, reliability, completeness or suitability for any particular purpose and disclaims all responsibility and all liability (including without limitation, liability in negligence) for all expenses, losses, damages (including indirect or consequential damage) and costs which you might incur as a result of the product being inaccurate or incomplete in any way for any reason.

Gundagai

Infrastructure CGRC Roads

- Reg
- Sta

Planning Boundaries

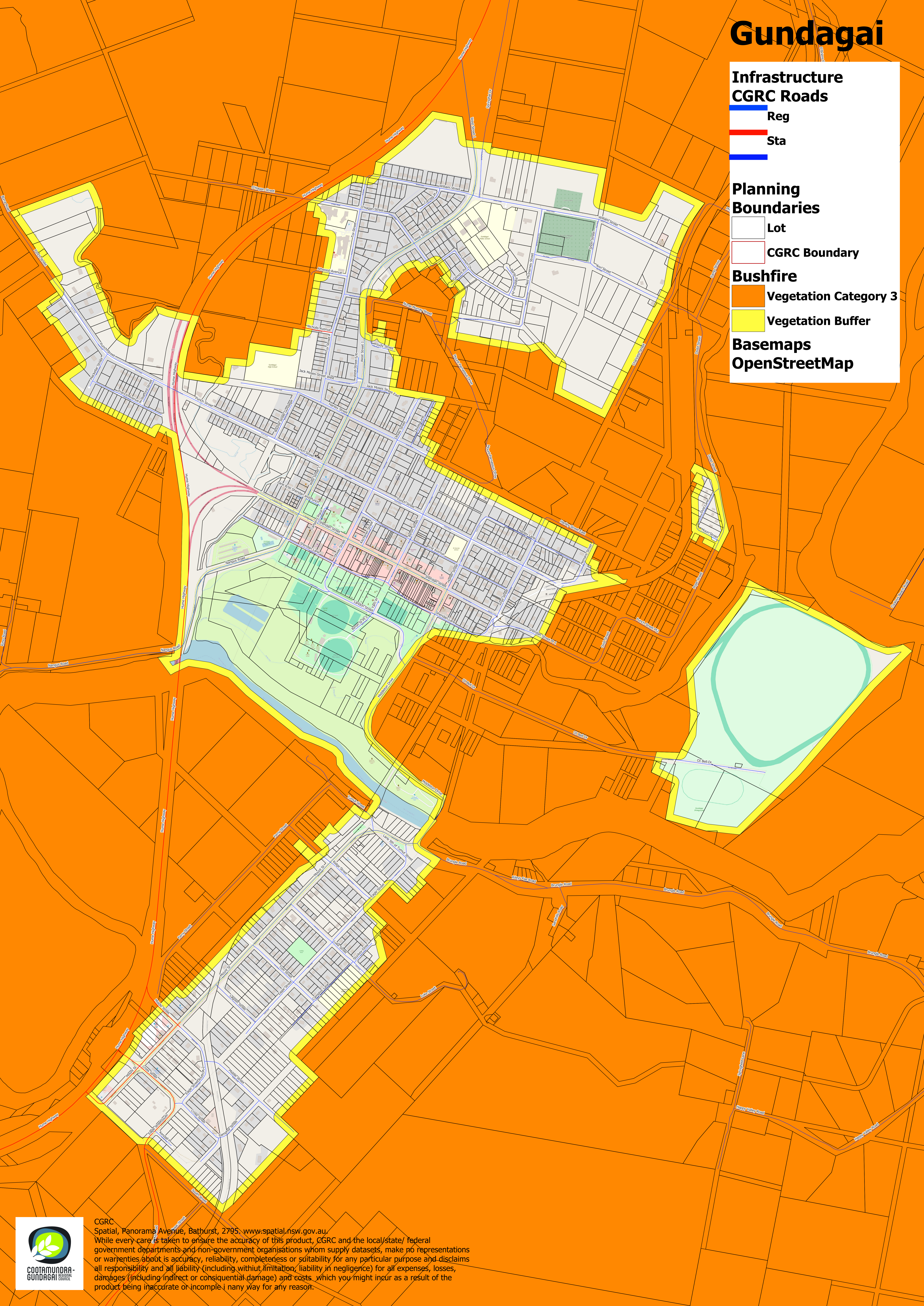
- Lot
- CGRC Boundary

Bushfire

- Vegetation Category 3
- Vegetation Buffer

Basemaps

OpenStreetMap



CGRC
Spatial, Panorama Avenue, Bathurst, 2795. www.spatial.nsw.gov.au
While every care is taken to ensure the accuracy of this product, CGRC and the local/state/ federal government departments and non-government organisations whom supply datasets, make no representations or warranties about its accuracy, reliability, completeness or suitability for any particular purpose and disclaims all responsibility and all liability (including without limitation, liability in negligence) for all expenses, losses, damages (including indirect or consequential damage) and costs which you might incur as a result of the product being inaccurate or incomplete in any way for any reason.

Nangus

Infrastructure

CGRC Roads

Reg

Planning Boundaries

Lot

CGRC Boundary

Bushfire

Vegetation Category 3

Vegetation Buffer

Basemaps

OpenStreetMap



CGRC
Spatial, Panorama Avenue, Bathurst, 2795. www.spatial.nsw.gov.au.
While every care is taken to ensure the accuracy of this product, CGRC and the local/state/ federal government departments and non-government organisations whom supply datasets, make no representations or warranties about its accuracy, reliability, completeness or suitability for any particular purpose and disclaims all responsibility and all liability (including without limitation, liability in negligence) for all expenses, losses, damages (including indirect or consequential damage) and costs which you might incur as a result of the product being inaccurate or incomplete in any way for any reason.