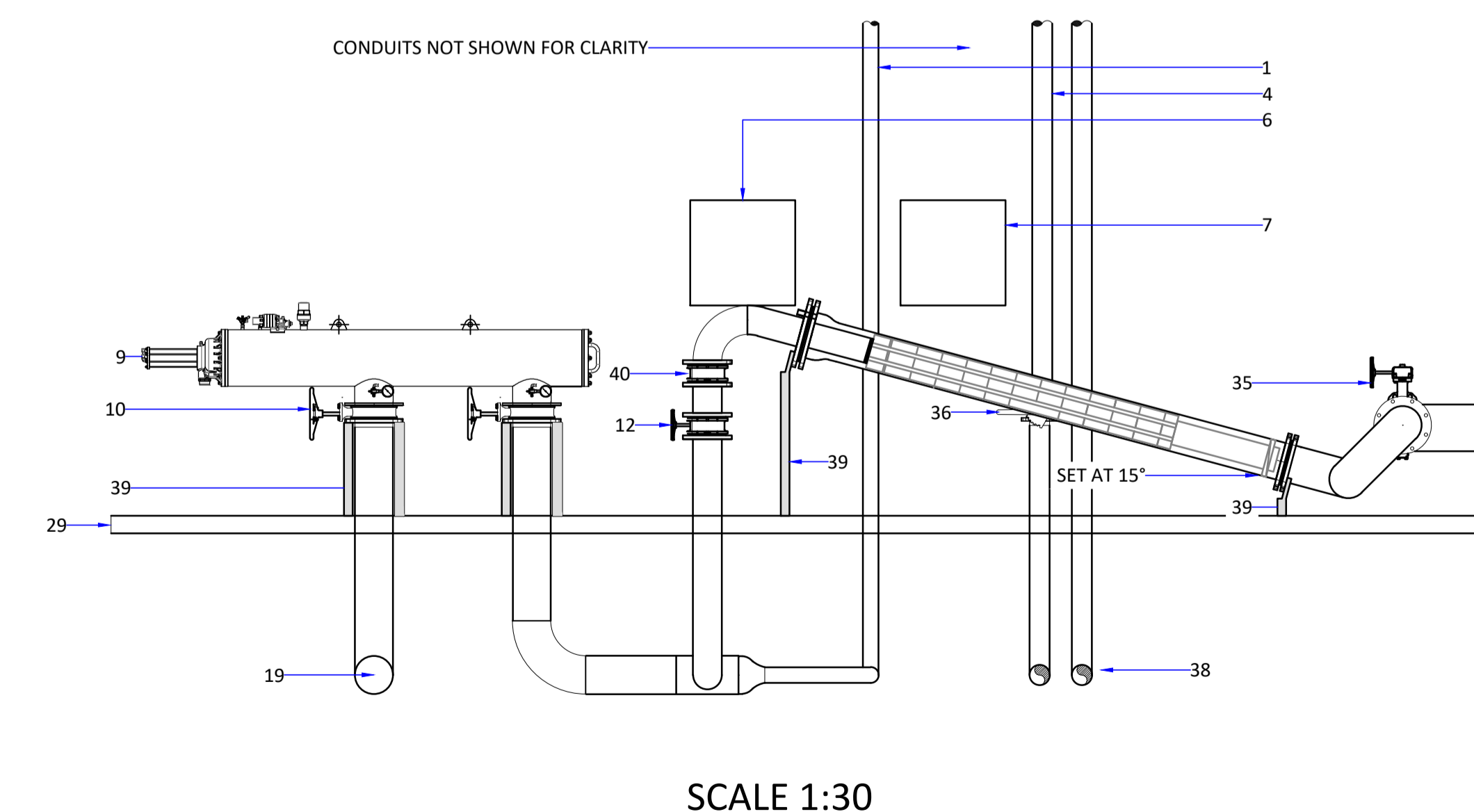
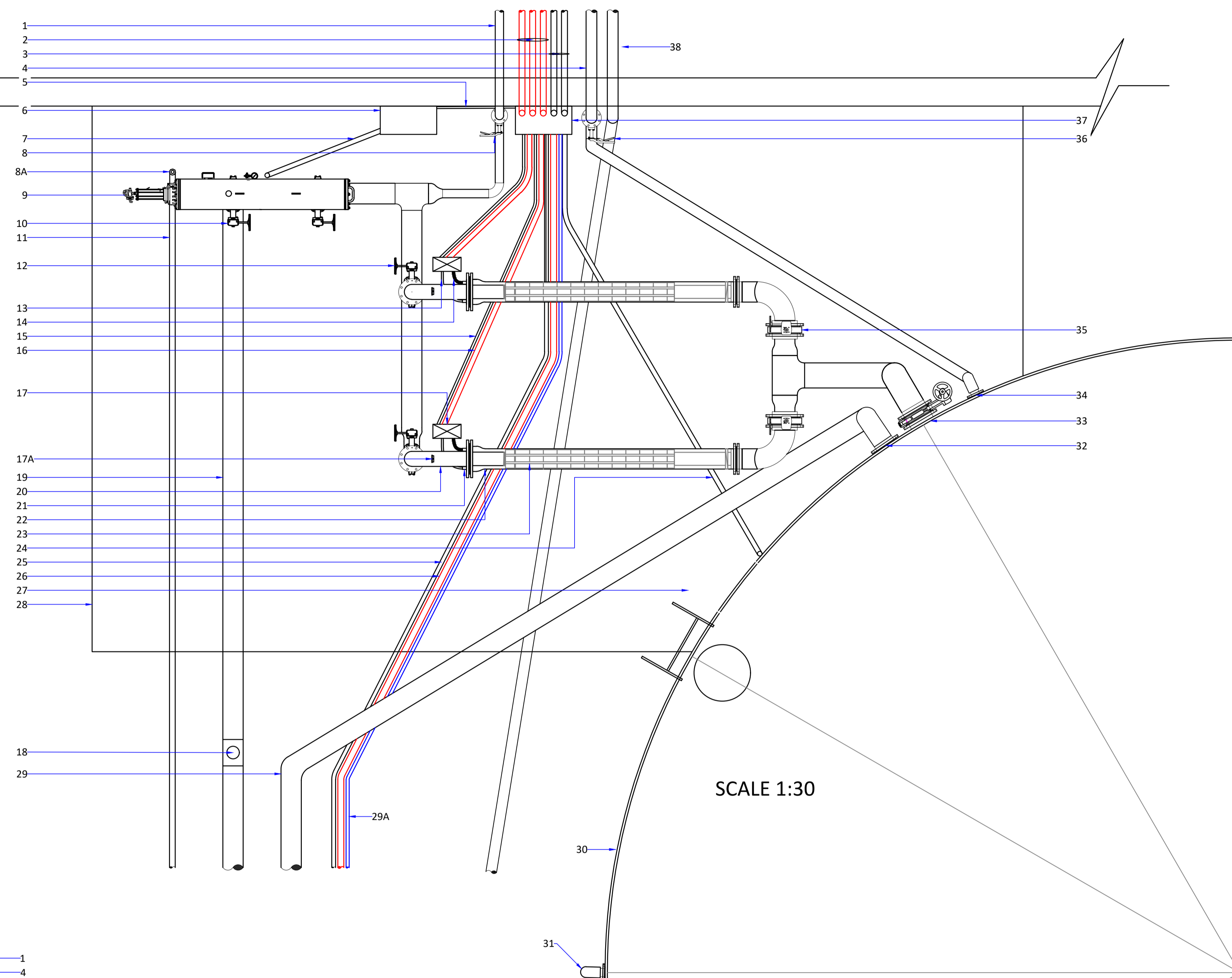
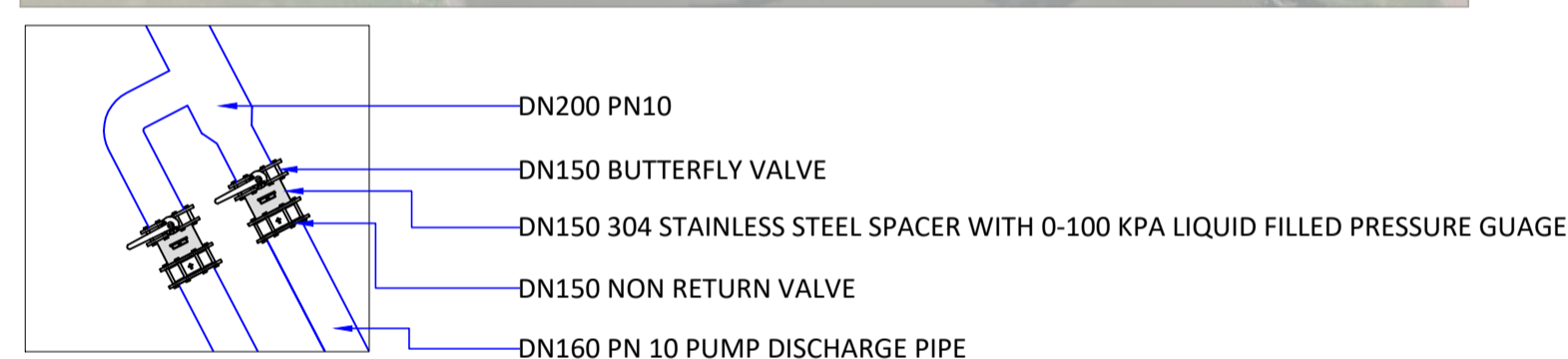
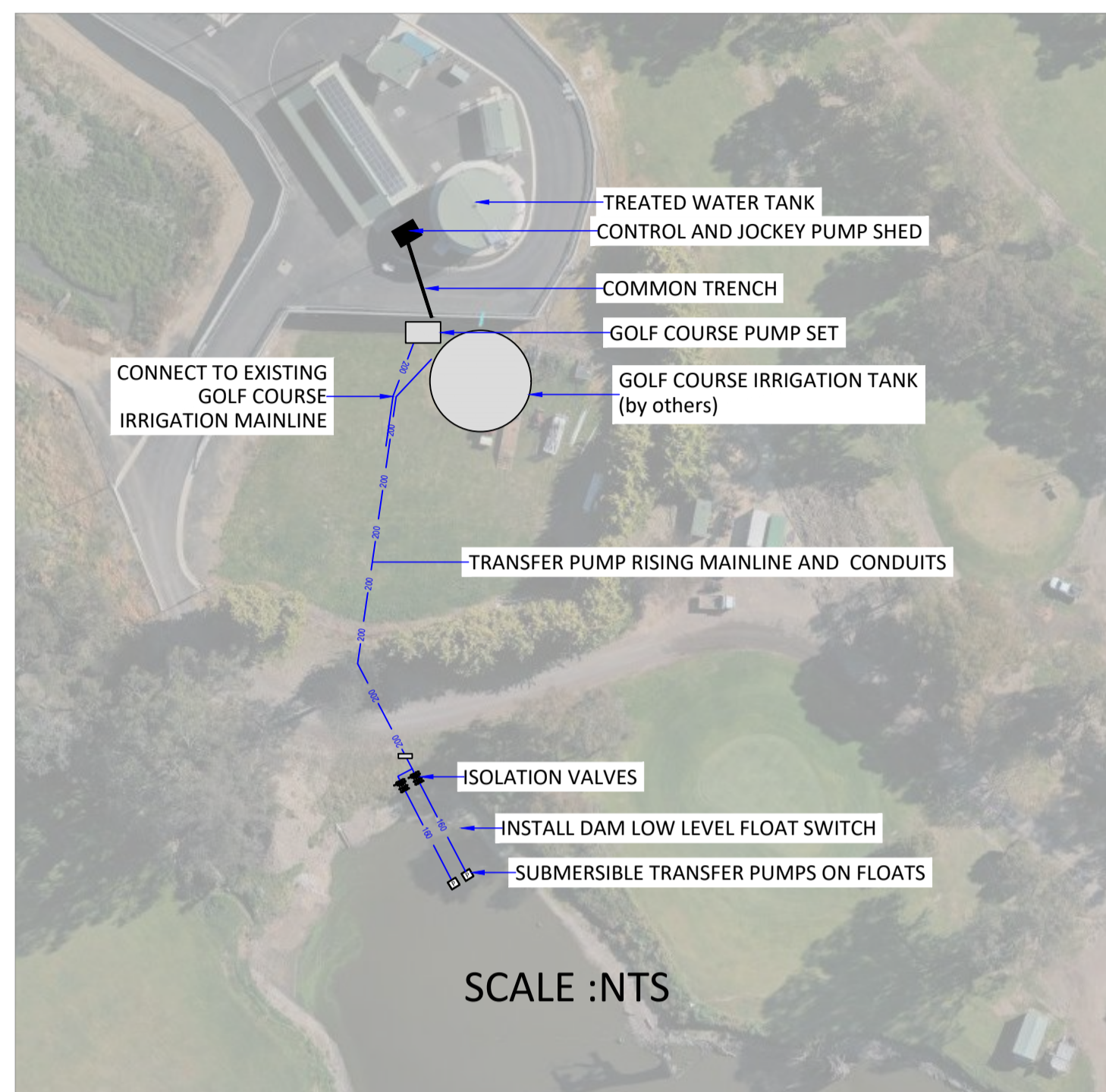


**COPYRIGHT:**  
All rights of ownership are retained by Water Wise Consulting. This and any accompanying documents may only be reproduced with the written permission of Water Wise Consulting.

ISSUE	DATE	NOTE
A	20/12/2023	TENDER SET



NOTE:  
PUMPS TO BE FITTED WITH TP-100 TEMPERATURE SENSORS

KEY	DESCRIPTION	KEY	DESCRIPTION
1	DN90 PN12.5 (JOCKEY PUMP DISCHARGE)	21	M32 SOCKET
2	3 X DN63 HD CONDUITS	22	PN12.5 STAINLESS STEEL PUMP SHROUD DN250 OUTLET - DN200 INLET
3	2 X DN 63 MD CONDUITS	23	SUBMERSIBLE PUMP
4	DN125 PN10 (TANK FILL)	24	DN50 MD CONDUIT (TANK LEVEL SENSORS)
5	DN20 HD CONDUIT (240 vac SUPPLY)	25	DN40 DAM (LEVEL SENSORS)
6	800X800X300 STAINLESS STEEL ENCLOSURE (FILTER CONTROL)	26	DN63 HD CONDUIT (TRANSFER PUMP)
7	DN50 MD CONDUIT (HYDRAULIC TUBES)	27	TANK ACCESS LADDER (REMOVABLE)
8	DN80 BUTTERFLY VALVE	28	100MM THICK REINFORCED CONCRETE SLAB
8A	DN25 VACUUM BREAKER VALVE	29	DN200 PN10 (TANK FILL)
9	FILTERWORX FW200-EL 200 MICRON	29A	DN32 MD CONDUIT (DECODER CABLE)
10	DN200 GEAR DRIVE BUTTERFLY VALVE	30	PANEL TANK
11	DN63 PN10 (FILTER FLUSH)	31	DN100 OVERFLOW
12	DN150 GEAR DRIVE BUTTERFLY VALVE	32	DN200 FLANGED INLET
13	TP100 CABLE IN UV STABLE CONDUIT (EQUAL TO COBALT SOLAR)	33	DN250 GEAR DRIVE BUTTERFLY VALVE
14	PUMP CABLE IN UV STABLE CONDUIT (EQUAL TO COBALT SOLAR)	34	DN100 INLET
15	DN25 MD CONDUIT (PUMP SENSOR CABLE)	35	DN200 GEAR DRIVE BUTTERFLY VALVE
16	DN40 HD CONDUIT (PUMP MOTOR)	36	DN100 GEAR DRIVE BUTTERFLY VALVE
17	300X300X200 STAINLESS STEEL ELECTRICAL ENCLOSURE	37	800X800X300 STAINLESS STEEL ENCLOSURE (PUMP ISOLATION BREAKERS)
17A	0-1000 KPA LIQUID FILLED PRESSURE GAUGE WITH ISOLATION VALVE	38	DN125 PN12.5 (PLAYING FIELD MAINLINE)
18	TORO FLOW SENSOR ASSEMBLY	39	50X50 STAINLESS STEEL ANGLE ( SUPPORT STRUCTURE)
19	DN200 PN12.5 IRRIGATION MAINLINE	40	DN150 NON RETURN VALVE
20	DN150 WITH 250 FLANGE HEAD PIECE		

